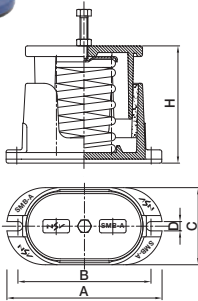
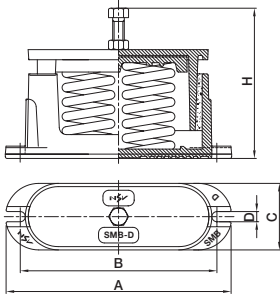


# SMB

## Spring Mount (Deflection : 25mm)



D-TYPE



### ● Features

As an enclosed spring mount, it has the spring between upper and bottom housings. An anchor hole is on the bottom housing and the tap is on the top housing, which allows level control of the bolt with a level bolt and nut to be used. Plus, the spring cap with a bolt guided hole is at the top of the spring to distribute the load transferred from the level bolt and the anti-frictioner is attached between upper and bottom housings, which somewhat reduces attenuation and friction caused by left-right and top-down relative displacement when the equipment is running. There is a CR pad attached on the bottom of the bottom housing to compensate disadvantages of the spring transferring high frequency due to a kind of surging effect.

- Usage - For pumps, refrigerators, compressors and power generators
- For ventilators
- For air conditioning units
- For equipment with a large horizontal reaction

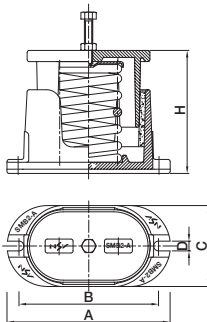
### ● Dimension & Selection Guide

Type	Capacity (kgf)	Spring Constant (kgf/mm)	Weight (kg)	Color	Dimension(mm)					
					A	B	C	D	H	Level Bolt
SMB-A-10	10	0.4	1.16	Pink	139	117	55	12	102	M10×60
SMB-A-25	25	1.0	1.20	Yellow						
SMB-A-50	50	2.0	1.34	Red						
SMB-A-75	75	3.0	1.34	Black						
SMB-A-100	100	4.0	1.30	Blue						
SMB-B-100	100	4.0	3.64	Blue	205	170	76	13	135	M12×65
SMB-B-150	150	6.0	3.64	Brown						
SMB-B-200	200	8.0	3.70	White						
SMB-B-300	300	12.0	3.94	Orange						
SMB-B-400	400	16.0	3.86	Pink						
SMB-C-400	400	16.0	5.10	Pink	228	205	90	13	150	M16×80
SMB-C-500	500	20.0	6.00	Green						
SMB-C-600	600	24.0	6.06	Blue						
SMB-C-750	750	30.0	6.14	Black						
SMB-C-1000	1000	40.0	6.32	Yellow						
SMB-D-1200	1200	48.0	13.38	Blue	306	277	94	14	170	M16×80
SMB-D-1500	1500	60.0	13.54	Black						
SMB-D-2000	2000	80.0	13.88	Yellow						

(NOTE) The mentioned size and scale can be altered to improve the quality performance and capacity of the product without any notice.

# SMB2

## Spring Mount (Deflection : 50mm)



### ● Features

As an enclosed spring mount, it has the same features and intended purpose as the SMB type, but is equipped with the spring having a static deflection of 50 mm. It is used when equipment like air conditioners and fans installed on a group floor of the building need to be kept quite when running.

- Usage - For high-efficient vibration isolation of pumps, refrigerators, compressors and power generators
- For high-efficient vibration isolation of ventilators
- For high-efficient vibration isolation of air conditioning units
- For equipment having large horizontal reaction

### ● Dimension & Selection Guide

Type	Capacity (kgf)	Spring Constant (kgf/mm)	Weight (kg)	Color	Dimension(mm)					
					A	B	C	D	H	Level Bolt
SMB2-50	50	1.0	8.30	Red	232	203	118	14	178	M12×65
SMB2-100	100	2.0	8.30	Blue						
SMB2-150	150	3.0	8.56	Brown						
SMB2-200	200	4.0	8.44	White						
SMB2-300	300	6.0	8.84	Orange						
SMB2-400	400	8.0	8.86	Pink						
SMB2-500	500	10.0	8.98	Green						
SMB2-600	600	12.0	8.98	Blue						
SMB2-750	750	15.0	8.74	Black						
SMB2-1000	1000	20.0	8.96	Yellow						

(NOTE) The mentioned size and scale can be altered to improve the quality performance and capacity of the product without any notice.