

FSL

Spring Mount (Deflection : 25mm)

● Features

It is a free standing mount with a vertical movement limiting device. It is designed to restrict vertical deflection when there is any change in the weight of equipment and/or structure (for example, pouring water out of a cooling tower, refrigerator) to prevent damage and distortion of equipment and pipe. The upper housing (compression plate) has a restrain bolt and level bolt while CR-type acoustical non skid pad on the bottom to prevent transfer of high-frequency vibration.

- Usage - For refrigerator of reciprocating and turbo types
- For cooling towers
- For other large pieces of equipment of which weight often changes

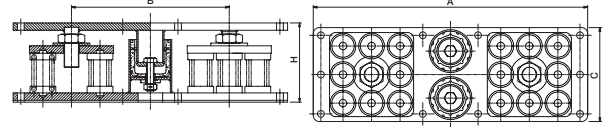
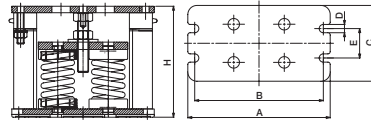
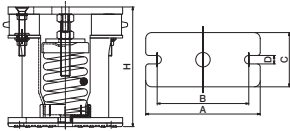
FSL-1



FSL-4



FSL-16



● Dimension & Selection Guide By Loads

Type	Capacity (kgf)	Spring Constant (kgf/mm)	Weight (kg)	Color	Dimension(mm)							Level Blot
					A	B	C	D	E	H		
FSL-1-300	300	12.0	3.90	Orange	190	153	90	14	-	199	M16X 80	
FSL-1-400	400	16.0	3.92	Pink								
FSL-1-500	500	20.0	4.46	Green								
FSL-1-600	600	24.0	4.54	Blue								
FSL-1-750	750	30.0	4.60	Black								
FSL-1-1000	1,000	40.0	4.78	Yellow								
FSL-1-1200	1,200	48.0	4.66	Red								
FSL-2-1200	1,200	48.0	8.78	Blue	302	262	90	14	-	199	M20X 90	
FSL-2-1500	1,500	60.0	8.94	Black								
FSL-2-2000	2,000	80.0	9.32	Yellow								
FSL-2-2400	2,400	96.0	9.06	Red								

Type	Capacity (kgf)	Spring Constant (kgf/mm)	Weight (kg)	Color	Dimension(mm)							Level Blot
					A	B	C	D	E	H		
FSL-4-3000	3,000	120.0	24.4	Black	310	280	165	18	64	242	M24X 110	
FSL-4-4000	4,000	160.0	25.1	Yellow								
FSL-4-4800	4,800	192.0	24.6	Red								
FSL-8-8000	8,000	320.0	46.3	Yellow	570	313	215	15	175	217	M36X 120	
FSL-8-9600	9,600	384.0	47.9	Red								
FSL-8-12000	12,000	480.0	49.5	Black								
FSL-16-16000	16,000	640.0	169.8	Yellow	894	514	306	22	256	258	M48X 140	
FSL-16-19200	19,200	768.0	173.0	Red								
FSL-16-24000	24,000	960.0	176.2	Black								

(NOTE) The specification and data are subject to change without prior to for improvement of product performance and quality.

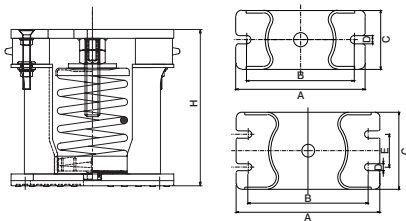
FSL2

Spring Mount (Deflection : 50mm)

● Features

As a type of FSL series, it uses SMA2 type (static deflection of 50mm) and prevents damage and distortion of the equipment and pipe. The upper housing (compression plate) has a restrain bolt and level bolt, while the CR-type acoustical non skid pad on the bottom is to prevent the transfer of high-frequency vibration).

- Usage - For refrigerator of reciprocating and turbo types
- For cooling towers
- For other large pieces of equipment of which weight often changes



● Dimension & Selection Guide By Loads

Type	Capacity (kgf)	Spring Constant (kgf/mm)	Weight (kg)	Color	Dimension(mm)							Level Blot
					A	B	C	D	E	H		
FSL2-200	200	4	4.9	White	220	183	100	14	-	212	M20X 90	
FSL2-300	300	6	5.1	Orange								
FSL2-400	400	8	5.3	Pink								
FSL2-500	500	10	5.4	Green								
FSL2-600	600	12	5.5	Blue								
FSL2-750	750	15	5.6	Black								
FSL2-1000	1,000	20	5.6	Yellow								
FSL2-1200	1,200	24	19	Red	280	234	150	14	64	292	M20X 110	
FSL2-1500	1,500	30	19.2	Black								

Type	Capacity (kgf)	Spring Constant (kgf/mm)	Weight (kg)	Color	Dimension(mm)							Level Blot
					A	B	C	D	E	H		
FSL2-1800	1,800	36	19.4	Blue	280	234	150	14	64	292	M20X 110	
FSL2-2000	2,000	40	19.7	Yellow								
FSL2-2500	2,500	50	21.4	Brown								
FSL2-3000	3,000	60	21.7	White	330	276	180	16	64	338	M24X 110	
FSL2-3500	3,500	70	22.6	Black								
FSL2-4000	4,000	80	23.9	Orange								

(NOTE) The specification and data are subject to change without prior to for improvement of product performance and quality.