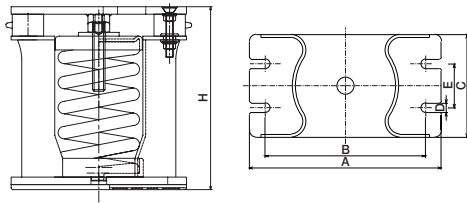


FSL3

Spring Mount (Deflection : 75mm)



● Features

Though it has same features as FSL2 type, it uses a spring with the static deflection of 75mm and therefore, it is used when more delicate vibration control is required. For example, it is mounted on equipment installed on a rooftop having the average slab length of 6-9 m and natural frequency less than 8.3 Hz (500RPM). In such a case, the natural frequency of the vibration control system needs to have the natural frequency of less than 2 Hz and at least 60 mm static deflection. FSA3 series spring is used in this model.

- Usage - High-efficiency vibration control for refrigerators of reciprocating and turbo types
- High-efficiency vibration control for cooling towers
- High-efficiency vibration control for other large pieces of equipment of which undergoes frequent weight changes (such as semiconductor production facilities)

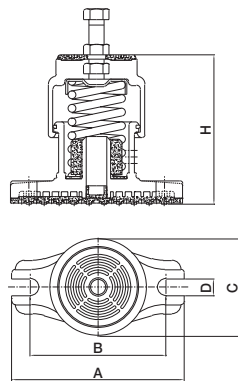
● Dimension & Selection Guide By Loads

Type	Capacity (kgf)	Spring Constant (kgf/mm)	Weight (kg)	Color	Dimension(mm)						
					A	B	C	D	E	H	Level Blot
FSL3-200	200	2.7	15.5	White	280	234	150	14	64	292	M20X140
FSL3-300	300	4	16.4	Orange							
FSL3-400	400	5.3	15.7	Pink							
FSL3-600	600	8	16.9	Blue							
FSL3-750	750	10	17.4	Black							
FSL3-1000	1000	13.3	19	Yellow							
FSL3-1200	1200	16	20.2	Red							
FSL3-1500	1500	20	21.6	Black							
FSL3-1800	1800	24	21.8	Blue							
FSL3-2000	2000	26.6	22.7	Yellow							
FSL3-2500	2500	33.3	23.4	Brown	330	276	180	16	64	338	M24X160
FSL3-3000	3000	40	40.6	White							
FSL3-3500	3500	46.6	42.2	Black							
FSL3-4000	4000	46.6	44.5	Orange							

(NOTE) The specification and data are subject to change without prior to for improvement of product performance and quality.

NSM/NSM2

Spring Mount (Deflection : 25mm, 50mm)



● Features

It is a closed-spring mount with excellent anti-vibration effects. Because the spring is not exposed to the outside, it is corrosion-resistant and it has a gauge at the center to help check deflection. The top and bottom housings are made of POLYCARBONATE plastic, which is stable regardless of load and strength, and anti-friction inside the housing reduces structure-borne noise. Plus, the anti-vibration neoprene pad on the top and bottom contact surfaces prevents structure-borne noise from getting transferred to the base of the equipment when it is in contact with STEEL and concrete.

- Usage - For ventilators
- For air handling units
- For pumps and standing pipes
- For equipment with large horizontal reaction

● Dimension & Selection Guide

Type	Capacity (kgf)	Spring Constant (kgf/mm)	Weight (kg)	Deflection (mm)	Dimension(mm)						
					A	B	C	D	H	Level Blot	
NSM-25	25	1.0	0.44	25	132	104	66	13	115	M10X 60	
NSM-50	50	2.0	0.46								
NSM-75	75	3.0	0.50								
NSM-100	100	4.0	0.54								
NSM-150	150	6.0	1.16		170	134	99	14	143	M12X 65	
NSM-200	200	8.0	1.22								
NSM-300	300	12.0	1.36								
NSM-400	400	16.0	1.38		192	152	112	14	167	M16X 80	
NSM-500	500	20.0	2.08								
NSM-600	600	24.0	2.14								
NSM-750	750	30.0	2.22								

Type	Capacity (kgf)	Spring Constant (kgf/mm)	Weight (kg)	Deflection (mm)	Dimension(mm)						
					A	B	C	D	H	Level Blot	
NSM2-50	50	1.0	2.44	50	223	183	137	14	180	M12X 65	
NSM2-100	100	2.0	2.50								
NSM2-150	150	3.0	2.46								
NSM2-200	200	4.0	2.50								
NSM2-300	300	6.0	2.70								
NSM2-400	400	8.0	3.06								
NSM2-500	500	10.0	2.76								
NSM2-600	600	12.0	2.62								
NSM2-750	750	15.0	2.92								

(NOTE) The mentioned size and scale can be altered to improve the quality performance and capacity of the product without any notice.