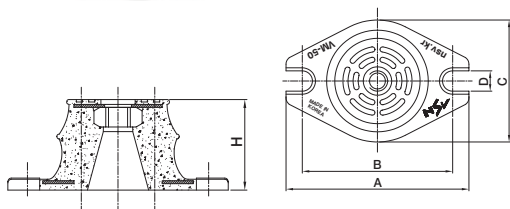


VM-1000

Rubber Mount
(Deflection : 6~8mm)



• Features

A VM-1000 mount is light, small and easy to install, so it can be used in high displacements. Plus, it has a wide application because it is designed to ensure structural stability. With a fixing nut inside the center of the neoprene rubber mount and steel plate on the top and bottom, it can be securely anchored to the ground.

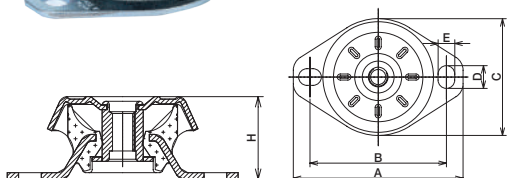
• Dimension & Selection Guide

Type	Capacity (kgf)	Hardness (Hs)	Deflection (mm)	Weight (kg)	Dimension(mm)					
					A	B	C	D	H	Level Bolt
VM-1040	60	60±5	6	0.18	75	60	46	8	35	M8
VM-1050	80		6	0.21	90	74	60	10	40	M10
VM-1060	120		6	0.31	113	90	69	10	45	M10
VM-1070	150		6	0.34	130	105	81	12	50	M10
VM-1080	300		8	0.42	130	110	90	12	50	M10
VM-1100	600		8	1.78	169	140	112	13	60	M12

(NOTE) The mentioned size and scale can be altered to improve the quality performance and capacity of the product without any notice.

VM-2000

Rubber Mount
(Deflection : 8mm)



• Features

VM-2000 mount is a vibration isolator to easily control multi-axial vibration. Its inside is made of neoprene rubber to control excessive movement. At the center of rubber mounts there is a solid fixation nut, and the body was made of steel plate to fix firmly to the floor.

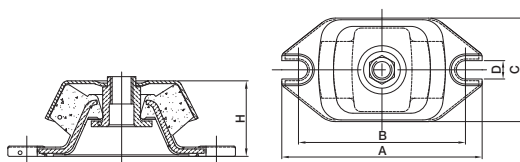
• Dimension & Selection Guide

Type	Capacity (kgf)	Deflection (mm)	Hardness (Hs)	Weight (kg)	Dimension(mm)						
					A	B	C	D	E	H	Level Bolt
VM-2070	100	8	60±5	0.34	112	90	77	15	11	40	M12
VM-2080	300			0.73	135	110	90	17	13	45	M12
VM-2100	500			1.22	164	135	105	21	13	50	M16
VM-2120	1000			1.56	190	161	128	21	18	55	M16
VM-2150	1500			2.18	200	160	150	110	18	60	M20
VM-2180	2000			2.55	228	186	184	142	18	70	M20

(NOTE) The mentioned size and scale can be altered to improve the quality performance and capacity of the product without any notice.

VM-3000

Rubber Mount
(Deflection : 6mm)



• Features

A VM-3000 mount is capable of controlling vibration in multi-axis directions. The top stainless steel cap prevents a distortion of the vibration isolator by oil and water, and moreover, neoprene rubber is used inside to control excessive movement. Plus, it can be firmly fixed to the ground with the fixing nut inside the center of the neoprene rubber mount and steel plate on top and bottom.

• Dimension & Selection Guide

Type	Capacity (kgf)	Hardness (Hs)	Weight (kg)	Dimension(mm)					
				A	B	C	D	H	Level Bolt
VM-3060	100	60±5	0.24	120	100	62	11	45	M12
VM-3070	300		0.72	150	126	78	13	50	M12
VM-3090	500		1.8	180	150	94	16	60	M16
VM-3110	700		2.45	226	189	118	19	70	M16

(NOTE) The mentioned size and scale can be altered to improve the quality performance and capacity of the product without any notice.