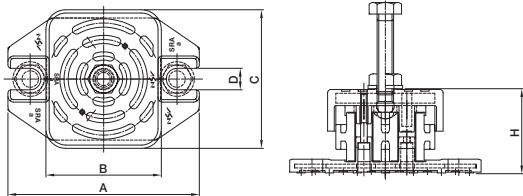


# SRA

## Spring Rubber Mount (Deflection : 6~12mm)

● Features

SRA mount is an improved version of SRM spring rubber mount with upgraded shock and vibration control effects. With SRP spring rubber pad, it facilitates control of the level and moreover, this pad can be installed in 2 layers to increase efficiency. It is designed to insert a reinforcing plate in-between in order to remove insecurity when displacement increases and to bear the load in a stable manner while preventing separation. On the top and bottom of the SRA mount, bumpy neoprene housing with reinforcing material inside is mounted to prevent slipping from the equipment and to shut out structure-borne noise.



- Usage
  - For facilities and equipment (for example, pump, AHU and fan)
  - For vertical/horizontal pipes and ducts
  - For industrial equipment
  - For machines that generate vibration in horizontal and vertical directions

● Dimension & Selection Guide

Model	Type	Capacity (kgf)	Deflection (mm)	Weight (kg)	Dimension(mm)					Level Bolt
					A	B	C	D	H	
SRA	SRA-100	100	6.0	0.64	114	89	84	13	47	M10X65L
	SRA-200	200		0.66						M10X65L
	SRA-400	400		1.86	155	128	110	14	50	M12X70L
	SRA-600	600		1.88						M12X70L
	SRA-800	800		1.84						M12X70L
SRA-2	SRA-2-100	100	12.0	0.82	114	89	84	13	81	M10X65L
	SRA-2-200	200		0.86						M10X65L
	SRA-2-400	400		2.50	155	128	110	14	85	M12X70L
	SRA-2-600	600		2.52						M12X70L
	SRA-2-800	800		2.60						M12X70L

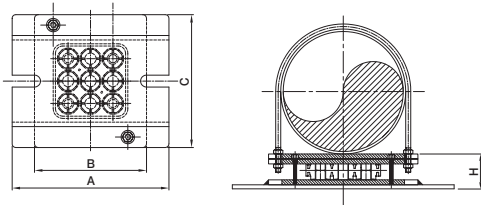
(NOTE) The mentioned size and scale can be altered to improve the quality performance and capacity of the product without any notice.

# SRH-U

## Spring Rubber Mount (Deflection : 5.5mm)

● Features

It is an upgraded mount designed to control vibration from horizontal pipes using SRP type spring rubber pad with advantages of anti-vibration rubber and metal spring. SRH type is installed on top of steel structure individually or together to better absorb vibration from pipes. Plus, U-bolt slot hole is on steel plate of top and bottom housings, which facilitates installation and prevents pipes from getting out of their original location.



- Usage
  - For horizontal pipes

● Dimension & Selection Guide

Pipe Diameter	SRP	A	B	C	H
φ50	A(100,200)	110	110	86	40
φ65		110	110	86	40
φ80		120	120	74	40
φ100		150	120	74	40
φ125		175	120	74	40
φ150		200	120	74	40
φ150	B(400~800)	200	150	122	42
φ200	B(400~800)	270	210	122	42
φ250	B(400~800)	320	260	122	42
φ250	C(1000~2000)	320	260	140	42
φ300	B(400~800)	380	300	122	42
φ300	C(1000~2000)	380	300	140	42
φ350		420	320	140	42
φ400		470	400	140	42
φ450		520	420	140	42
φ500		570	500	140	42

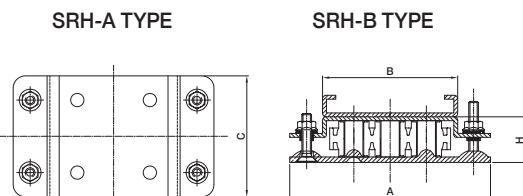
(NOTE) The mentioned size and scale can be altered to improve the quality performance and capacity of the product without any notice.

# SRH-SH

## Spring Rubber Mount (Deflection : 5.5mm)

● Features

It Is Used As A Sliding Shoe On The Pipe And Installed Using Pipe Clip & Bolt. The Allowed Range Of Support Spacing For Horizontal Pipe Is From 2.0 M To 5.0 M And, The Model Changes Depending On The Support Spacing.



● Dimension & Selection Guide (SRH-A TYPE)

Pipe Diameter	SRP	A	B	C	H
φ50	A(100,200)	166	80	100	56
φ65					
φ80					
φ100					
φ125					
φ150					
φ200	B(100~800)	166	105	100	56
φ250					
φ300					
φ350					
φ400					
φ450					
φ450	C(400~2000)	266	156	140	56

(SRH-B TYPE)

SRP	A	C	H
100X2EA	250	150	48
200X2EA	250	150	48
100X2EA	250	150	48
200X2EA	250	150	48
200X2EA	250	150	48
200X2EA	250	150	48
400X2EA	350	150	48
600X2EA	350	150	48
600~800X2EA	350	150	48
1000~1500X2EA	350	200	48

(NOTE) The mentioned size and scale can be altered to improve the quality performance and capacity of the product without any notice.