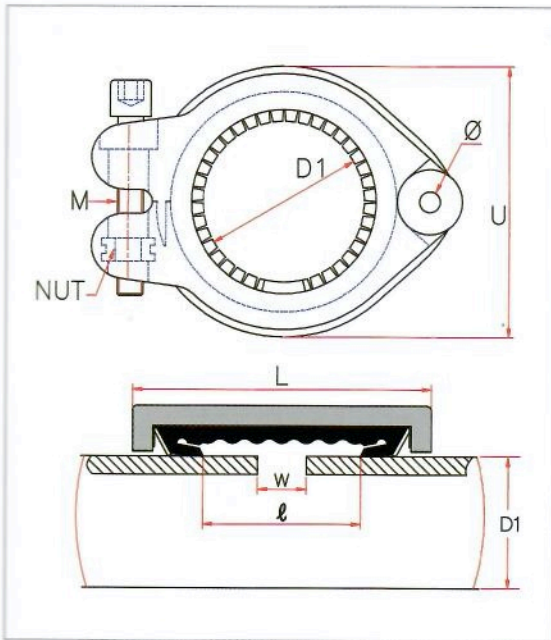


## ▶▶▶ Model 1. EGR-S (Full axial restraint)



65A 5.5Mpa (55kgf/cm<sup>2</sup>) Pressure Test

### Parts & Materials



No.	Component	Material
①	CASING	Special plastic
②	RUBBER GASKET	EPDM Water, air, powder, slurry, sewage, odours (-30°C ~ +90°C)
		NBR Hydrocarbons, oil and gases (-20°C ~ +70°C)
③	BOLT	SUS 304 / 316L
④	NUT	SUS 304
⑤	GRIP RING	SUS 304H / SUS 301H
⑥	Holding ring	SUS 304H / 316L
⑦	HINGE PIN	SUS 304 / 316L

### Table-Dimensions(mm) Pipe : KS/JIS, ASTM

SIZE	Outside diam		Bolt M	U	Ø	L	W/mm	Max Gap l	Weight Kg	Working pressure kgf/cm <sup>2</sup>	Lock torque Kgf/cm
	KS/JIS	ASTM									
15	NIL										
20	27.2	26.7	6×40	56	6	63	1	19	0.20	20	60~80
25	34.0	33.4	6×45	63	6	63	1	19	0.24	20	60~80
32	42.7	42.2	8×50	75	6	64	1.5	20	0.32	20	120~140
40	48.6	48.3	8×50	80	6	64	1.5	20	0.34	18	120~140
50	60.5	60.3	10×65	99	7	88	2	30	0.68	15	150~170
65	76.3	73.0	10×65	115	7	88	2	30	0.77	15	150~170
80	89.1	88.9	12×70	135	9	114	3	48	1.38	13	200~250
100	114.3	114.3	12×75	160	9	114	3	48	1.56	12	200~250

Note : mm×0.039 = inch Kg×2.2 = lbs. Kgf/cm<sup>2</sup>×14.22 = psi Kgf.cm×0.72 = ft.lbs

