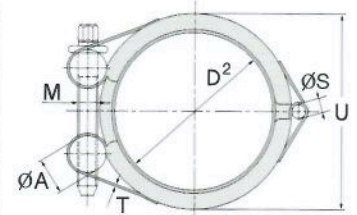
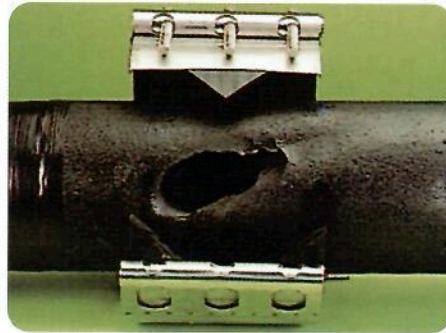


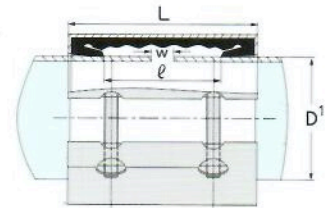


# REPAIR CLAMP HINGE COUPLING

## Pipes Repair Clamp Joints



**Model 5 : RCH-S**  
(REPAIR CLAMP HINGE - STANDARD)



**Model 6 : RCH-L**  
(REPAIR CLAMP HINGE - LONG)

### RCH-S (15A~1,000A)

\* PIPE O.D. specs are available for all sizes.

Size ND	O/D(mm)				Range D2	M	L	ℓ	U	W.P	W.T	P.N.m(kgf/cm)
	D1											
15A 1.2"	21.3	21.7	22.0		O/D±0.3	M6 × 40L	57	32	46	18	0.2	3~5 (30~50)
20A 3/4"	26.9	26.7	27.2		O/D ±0.5	M6 × 40L	57	32	46	18	0.2	3~5 (30~50)
25A 1"	33.4	33.7	34.0		O/D ±0.6	M6 × 40L	57	32	51	18	0.25	3~5 (30~50)
32A 1-1/4"	42.2	42.4	42.7		O/D ±0.6	M8 × 50L	57	32	62	18	0.35	4~6 (40~60)
40A 1-1/2"	40.9	44.5	48.3	48.6	O/D ±1.0	M8 × 50L	57	32	66	18	0.35	4~6 (40~60)
50A 2"	54.0	57.0	60.3	60.5	O/D ±1.0	M10 × 65L	80	46	81	16	0.8	8~10 (80~100)
65A 2-1/2"	66.7	69.0	73.0	76.3	O/D ±1.0	M10 × 65L	80	46	100	16	0.86	8~10 (80~100)
80A 3"	79.8	84.0	88.9	89.1	O/D ±1.5	M12 × 80L	107	65	115	14	1.6	20~25 (200~250)
90A 3-1/2"	98.0	101.6			O/D ±1.5	M12 × 80L	107	65	144	14	1.7	20~25 (200~250)
100A 4"	106.3	108.0	114.3	118.0	O/D ±1.5	M12 × 80L	107	65	144	14	1.7	20~25 (200~250)
125A 5"	129.0	133.0	139.8	141.3	O/D ±1.5	M14 × 95L	117	71	175	12	2.9	30~35 (300~350)
150A 6"	154.0	159.0	165.2	168.3	O/D ±1.5	M14 × 95L	117	71	196	12	3.3	30~35 (300~350)
200A 8"	204.0	216.3	219.1		O/D ±2.0	M16 × 130L	155	80	260	10	6.7	40~50 (400~500)
250A 10"	254.0	267.4	273.1		O/D ±2.0	M16 × 130L	155	80	300	10	7.5	40~50 (400~500)
300A 12"	304.0	318.5	323.9	325.0	O/D ±2.0	M18 × 140L	155	80	350	10	9.0	60~80 (600~800)
350A 14"	340.0	355.6	377.0	368.0	O/D ±2.0	M18 × 140L	155	80	400	10	10.4	60~80 (600~800)
400A 16"	406.4	414.5	419.0	429.0	O/D ±2.5	M18 × 140L	155	94	450	10	11.0	80~100 (800~1000)
450A 18"	457.2	465.3	480.0		O/D ±2.5	M18 × 150L	155	94	500	10	12.8	80~100 (800~1000)
500A 20"	508.0	516.9	532.0		O/D ±3.0	M18 × 150L	155	94	550	10	13.6	100~120 (1000~1200)

### RCH-L

Size ND	O/D(mm)				Range D2	M	L	ℓ	U	W.P	W.T	P.N.m(kgf/cm)
	D1											
15A 1.2"	21.3	21.7	22.0		O/D±0.3	M6 × 40L	72	46	46	18	0.35	3~5 (30~50)
20A 3/4"	26.9	26.7	27.2		O/D ±0.5	M6 × 40L	72	46	46	18	0.4	3~5 (30~50)
25A 1"	33.4	33.7	34.0		O/D ±0.6	M8 × 50L	100	64	51	18	0.5	3~5 (30~50)
32A 1-1/4"	42.2	42.4	42.7		O/D ±0.6	M8 × 50L	100	64	62	18	0.6	4~6 (40~60)
40A 1-1/2"	40.9	44.5	48.3	48.6	O/D ±1.0	M8 × 50L	100	64	66	18	0.65	4~6 (40~60)
50A 2"	54.0	57.0	60.3	60.5	O/D ±1.0	M10 × 65L	139	99	81	16	1.4	8~10 (80~100)
65A 2-1/2"	66.7	69.0	73.0	76.3	O/D ±1.0	M10 × 65L	139	99	100	16	1.5	8~10 (80~100)
80A 3"	79.8	84.0	88.9	89.1	O/D ±1.5	M12 × 80L	203	146	115	14	3.0	20~25 (200~250)
90A 3-1/2"	98.0	101.6			O/D ±1.5	M12 × 80L	203	146	144	14	3.3	20~25 (200~250)
100A 4"	106.3	108.0	114.3	118.0	O/D ±1.5	M12 × 80L	203	146	144	14	3.3	20~25 (200~250)
125A 5"	129.0	133.0	139.8	141.3	O/D ±1.5	M14 × 95L	204	138	175	12	5.1	30~35 (300~350)
150A 6"	154.0	159.0	165.2	168.3	O/D ±1.5	M14 × 95L	204	138	196	12	5.7	30~35 (300~350)
200A 8"	204.0	216.3	219.1		O/D ±2.0	M16 × 130L	255	177	260	10	11.8	40~50 (400~500)
250A 10"	254.0	267.4	273.1		O/D ±2.0	M16 × 130L	255	177	300	10	13.1	40~50 (400~500)
300A 12"	304.0	318.5	323.9	325.0	O/D ±2.0	M18 × 140L	255	177	350	10	13.5	60~80 (600~800)
350A 14"	340.0	355.6	377.0	368.0	O/D ±2.0	M18 × 140L	255	170	400	10	18.2	60~80 (600~800)
400A 16"	406.4	414.5	419.0	429.0	O/D ±2.5	M18 × 140L	255	170	450	10	19.6	80~100 (800~1000)
450A 18"	457.2	465.3	480.0		O/D ±2.5	M18 × 150L	255	170	500	10	21.0	80~100 (800~1000)
500A 20"	508.0	516.9	532.0		O/D ±3.0	M18 × 150L	255	170	550	10	23.0	100~120 (1000~1200)

ND: Nominal Diameter (A)

ℓ: Allowable Shrinkage/Expansion on Clearance (m/m)

D1: Actual Outer Diameter of Pipe (m/m)

D2: Min./Max. Allowable Limit for Pipe (m/m)

U: Outer Diameter of Coupling (m/m)

M: Fastener Bolt Size/Length (m/m)

W.P: Working Pressure (kgf/cm<sup>2</sup>)

W.T: Weight Per Unit (kg)

L: Coupling Width (m/m)

P: Optimum Locking Torque Value Nm (kgf·cm)

\* The specifications are subject to change for quality improvement.